

The fencer's guide in Paris during the Olympics

Treasure hunt for all :
20% in-store discount!



 1788 **PRIEUR**

INSIDE
LES JEUX

FOREWORD

As the “friend of fencers” (*Ami des escrimeurs*) and the only French fencing equipment manufacturer more than two hundred years old, it's only natural that Prieur should offer you this **Fencers' Guide** to help you make the most of the Paris Olympics!

The idea is also to offer you **several footpaths between the Grand Palais**, where the fencing events take place, **and our store**, next to which we have an **exhibition on our history**.

We're offering you fifteen places to see or revisit in the French capital on the occasion of the Olympics, for their historical, cultural or sporting interest, all organized around a **treasure hunt for all, with a 20% discount in our store !**

So... En garde ! Prêt ! Allez !

 ¹⁷⁸⁸ **PRIEUR**


FRA

SETTLEMENT

To mark the Olympic Games, Prieur Sports is **offering you a 20% discount on its treasure hunt for all**. Different routes are offered, depending on the profile that suits you best.

To take part :

- **Take photos of 3 of the key points** we suggest in the list below. Photos from a distance are allowed, provided the monument is clearly recognizable.
- Go to our store at 42 rue Gassendi and **take a selfie in front of our shop/exhibition**. Don't hesitate to send it to us on our Instagram account @prieur_sports or by e-mail to: expo.jo@prieur-sports.com
- **Show your 3 photos + your selfie** to the person present in the store and **benefit from an immediate 20% discount on a wide range of products in the store !**

Game valid from July 25 to August 4, 2024 inclusive.

PS: Feel free to tag us if you make stories or posts during your journey :)

THE ROUTES



FAMILY ROUTE: The most direct way to get from the Grand Palais to our boutique and exhibition. Designed for people with young children or those who don't want to walk too long.





FENCER COURSE: A 7km route that takes you to some of the most important fencing venues in the world and in France. It also takes you past a large number of key points.



SYMBOLS OF THE OLYMPICS COURSE : Another variant that lets you (re)discover the Arc de Triomphe and the Eiffel Tower, adorned with the symbols of the Paralympic and Olympic Games respectively.

FREE: Of course, you're free to go to these different points as you please, without following any pre-established routes! Each location is presented below, allowing you to choose the points that interest you. All the points (identified by a star) are shown on this map: [CLICK TO VIEW MY MAPS](#)
[PRIEUR MAP](#)

You'll find the corresponding symbols below each "Key points" card below. The cards marked with a star  are simply those which are not present in one of the predefined itineraries.

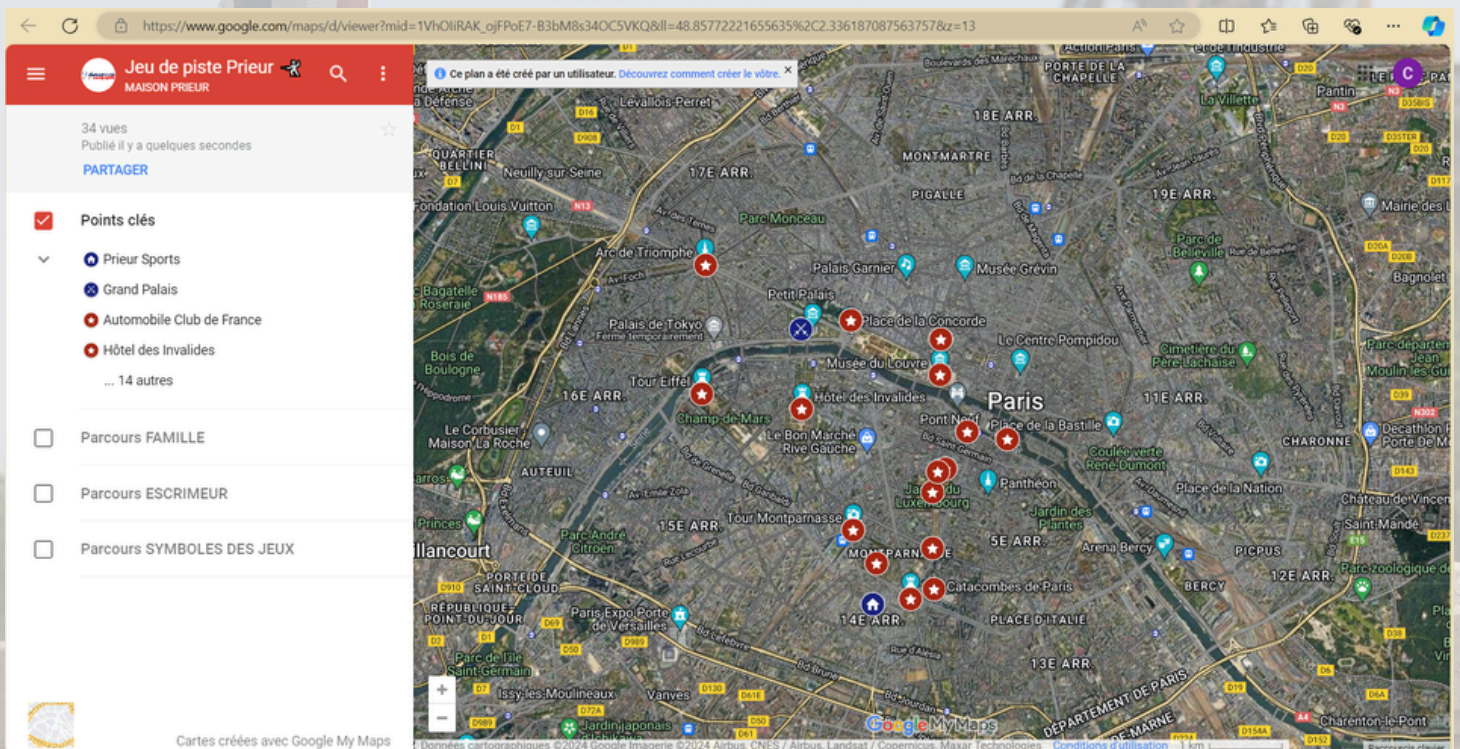
 During the Olympics, travel restrictions may be in place in certain areas on certain dates, even on foot. We invite you to make enquiries in advance of your trip: <https://anticiperlesjeux.gouv.fr/carte-interactive-impacts-deplacements-ile-france>
Thank you for your understanding.

THE MAP

All the points (identified by a red star on the map, except for the Grand Palais which is in blue with a crossed sword symbol) are arranged on this map : [CLICK TO VIEW THE MY MAPS PRIEUR MAP](#)

In the left-hand column, you can select the route of your choice. By default, the FAMILY route, the most direct, is selected. To deselect it, simply uncheck the box.

By clicking on the stars, you can also choose to open the point to Google Maps : practical for an “à la carte” or multi-day route.



Grand Palais

The Grand Palais, listed as a “historic monument” since 2000, is located in the heart of the capital. It was built for the 1900 Paris Universal Exhibition. Built using the most advanced construction techniques of the time, it boasts a majestic nave topped by a glass roof, making it famous the world over.

For the Paris 2024 Olympic and Paralympic Games, the nave will host fencing events from July 27 to August 4 and wheelchair fencing from September 3 to 7.

Find out more : <https://olympics.com/fr/paris-2024/sites/grand-palais>



Montparnasse Tower

Enjoy an incredible panoramic view of the Eiffel Tower and all the other iconic monuments of Paris. The Observatoire Paris Montparnasse terrace **offers a unique, breathtaking 360° view.**

Location: 33 Avenue du Maine 75015 Paris

Find out more : <https://www.tourmontparnasse56.com/fr/>



Place de la Concorde Automobile club de France

Over 110 years ago, on November 29, 1913, the premises of the Automobile Club de France on Place de la Concorde in Paris welcomed **the birth of the International Fencing Federation!**

At the time, the federation had only 9 founding members: the United Kingdom, Belgium, Germany, Italy, France, Hungary, the Netherlands, the Czech Republic and Norway. Today, it counts no fewer than 156 affiliated member federations worldwide.

Find out more : <https://fie.org/fie/structure>



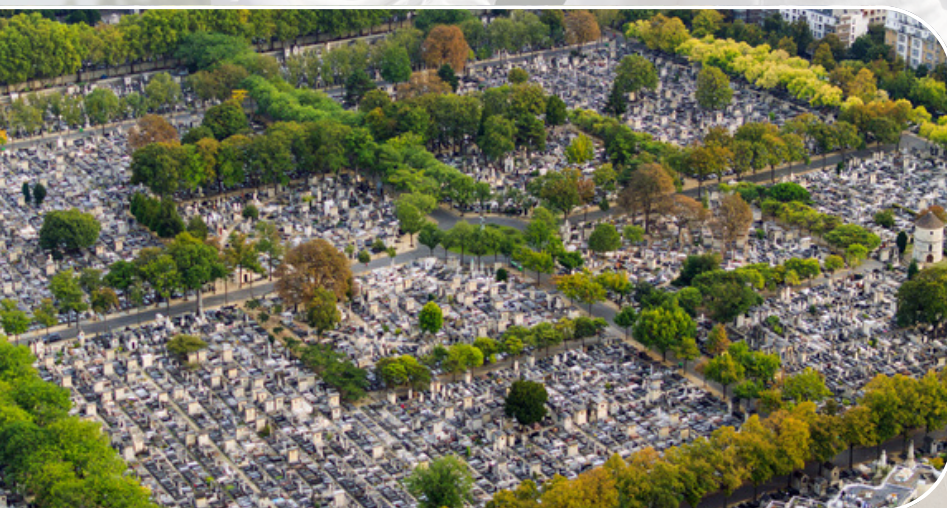
Montparnasse Cemetery

The South Cemetery, commonly known as the Montparnasse Cemetery, opened its doors on July 25, 1824. Covering 19 hectares, Paris' second largest intramural necropolis is home to many of the city's leading figures from the worlds of politics and the arts.

It is also one of the capital's most important green spaces. There are 1,200 trees of 40 different species, mainly lime, sophora, thuja, maple, ash and conifer.

The foil fencer Claude Netter (1924-2007), team gold medallist at the 1952 Games and team silver medallist at the 1956 Games, is buried here.

Find out more : <https://www.paris.fr/lieux/cimetiere-du-montparnasse-4082>



Garden of the Palais Royal

Created by Pierre Desgots in the first quarter of the 17th century, the garden was modified in 1674 by André Le Nôtre, and completely transformed by the construction of the galleries in the last quarter of the 18th century. It epitomizes the spirit of the French garden. The latest changes to the garden were carried out by landscape designer Mark Rudkin in 1992.

The garden of the Palais Royal has been awarded the **“Jardin remarquable”** label.

Place of duels

Find out more : <https://www.domaine-palais-royal.fr>



Louvre

The world's largest and most visited museum, the Louvre is currently staging an exhibition entitled "Olympism. Modern Invention, Ancient Legacy". The exhibition offers an insight into the creation of the first Olympic Games and its iconographic sources at the end of the 19th century, the political context and how its organizers sought to reinvent the competitions of ancient Greece.

Find out more : <https://www.louvre.fr/le-louvre-a-l-heure-des-jeux>

Due to the Paris 2024 Olympic Games, reservations are mandatory. The museum will also be closed on July 25 and 26.



Salle d'armes Coudurier

Founded in the 19th century, this is **the oldest fencing hall still in operation in Paris**, and **has been teaching the principles of foil since 1886 !**

Located in the Quartier Latin, between the Seine and Saint-Germain, this illustrious hall made a name for itself in the second half of the 19th century under the name of Cercle Saint-André-des Arts. In 1893, Maître Alexandre Coudurier took over the hall under his own name. In 1913, his son Maurice (1896-1986) took over. He turned the place into **a living conservatory of a sporting discipline that was also an art of living.**

Since 1971, Master Jean-Pierre de Pinel de La Taule, imbued with the same spirit, has brought this hall to life and passed on this demanding and exhilarating discipline to his students.

Location: 6 Rue Gît-le-Cœur, 75006 Paris



Salle d'Armes
Coudurier
Maître de Pinel de la Taule



Odéon - Théâtre de l'Europe

The Théâtre national de l'Odéon, known since March 1990 as Odéon - Théâtre de l'Europe, is a public theater in Paris. It is located on Place de l'Odéon, in the 6th arrondissement, and was **inaugurated in 1782 to house the Théâtre-Français troupe**. It is the oldest monumental theater in Paris.

A national institution, the Odéon plays a key role in the French theater network, co-producing and hosting shows by regional companies and drama centers. Defined as the “common home of European theater”, the Odéon's mission is to encourage and promote European dramatic creation, helping to raise its profile in France and the rest of the world.

Find out more : <https://www.theatre-odeon.eu/fr/lodeon#un-theatre-national>

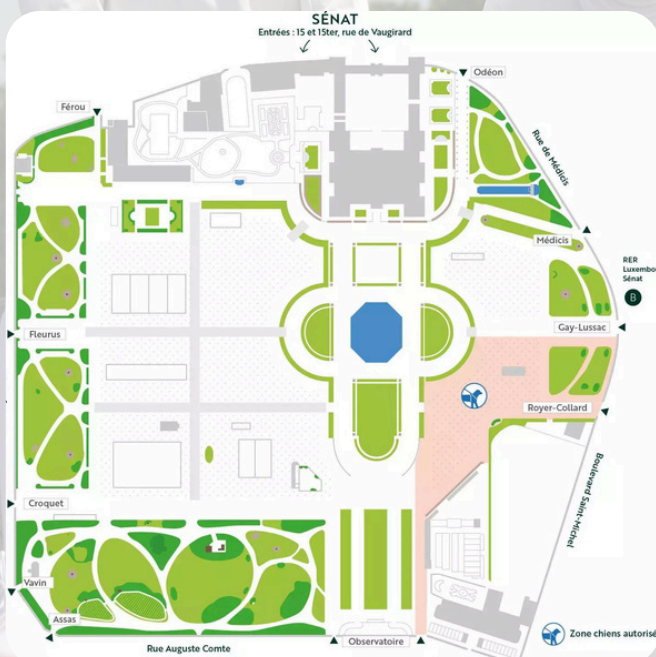


Jardin du Luxembourg

Acquired by Marie de Médicis between 1614 and 1631, the Jardin du Luxembourg underwent numerous transformations, until Haussmann's work gave it its current layout. While the surface area of the estate - around 23 hectares - is roughly equivalent to that of Marie de Médicis' acquisitions, its configuration has changed completely over the centuries. It was only at the end of the Second Empire that the garden was established within its present boundaries.

In 2022, it was voted **most beautiful garden in Europe** by the English-language website Housefresh, which analyzes the opinions of thousands of tourists from all over the world! Worldwide, it came third behind Singapore's Gardens by the Bay and Marrakech's Majorelle Garden.

Find out more : <https://jardin.senat.fr/histoire-patrimoine/histoire.html>



Sénat

Home to the Second Chamber of the French Parliament since 1799, the Palais du Luxembourg is first and foremost a place of work, but it is also home to an exceptional architectural and artistic heritage that we are keen to open up to visitors.

Find out more : <https://www.senat.fr/le-senat-et-vous/visiter-le-senat.html>

Location : 15, rue de Vaugirard 75291 Paris



Jardin de l'Observatoire

This vast garden belongs to the Paris Observatory. **It is home to no fewer than 100 trees of 15 different species**, including a hazelnut (*Corylus laciniata*) and a zelkova, flower beds and wide lawns, including a 900 m² lawn open to the public. Since 1992, the Paris Observatory has marked the Paris meridian.

Location : Boulevard ARAGO 75014 PARIS



Invalides

The Hôtel National des Invalides is an **exceptional monument**, easily identifiable in the Parisian landscape thanks to **the gilding of its famous Dome**. Visitors can explore the history of France through the collections of the Musée de l'Armée and the tomb of Napoleon I.

Upon entering the main courtyard, visitors can admire an artillery collection retracing 200 years of history, then head towards the entrance to the various museums, including the Musée de l'Armée, **which boasts one of the most exceptional collections of military history in Europe, if not the world.**

The Hôtel National des Invalides also embodies the emblematic values of the Republic, through national, civil and military tributes, military ceremonies and farewells to arms.

Through **the exhibition “Duels. The art of fighting”**, the Musée de l'Armée returns to the historical roots of the duel to explore its main principles and evolutions, right up to the fantasies of our collective imagination.

Find out more : <https://www.musee-armee.fr/au-programme/expositions/detail/duels-lart-du-combat.html>



Statue of Maréchal Ney

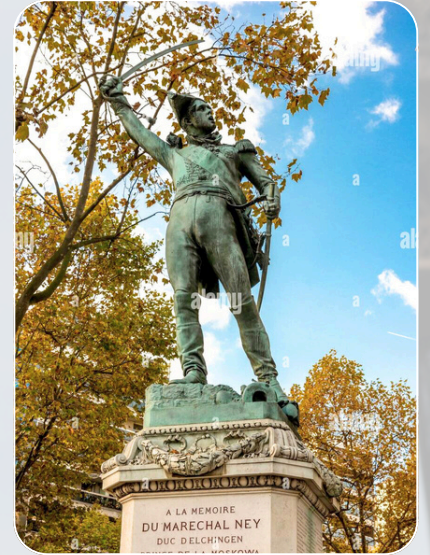
Michel Ney, duc d'Elchingen, prince de la Moskowa, maréchal d'Empire, born January 10, 1769 in Sarrelouis, Lorraine, was a French general of the Revolution, promoted to maréchal d'Empire in 1804 and shot on December 7, 1815, at the Place de l'Observatoire in Paris. **Saberman, he was described as an excellent fencer.**

He fought for France, under different regimes, for over twenty-five years. After touring the battlefields under enemy fire, Michel Ney ended his life in a cell, imprisoned in the Luxembourg Palace.

The victim of a policy of vengeance, in a climate of white terror and under pressure from foreign powers, his execution served as a symbol and guarantee for the regime, the Restoration of Louis XVIII. The Duc de Richelieu's words before the Chamber of Deputies, during the session introducing the amnesty bill, granted to all those who (...) took part in the rebellion and usurpation of Napoleon Bonaparte (...), on December 8, 1815, confirmed this: "Messieurs, a great example has just been set." His aide-de-camp, Octave Levavasseur, also commented: **"The allies needed a victim in reparation for the harm France had done them; and this victim, offered in expiation, was the purest illustration of our armies."**

A rich and complex character, Michel Ney has aroused the most diverse feelings. While his reversals in 1814 and 1815 are widely acknowledged, his impetuous character, courage, bravery and heroism are also universally appreciated. The collective imagination remembers his feats of arms more than his defections. His name remains attached to many of the great battles of the French Revolution and Empire. The **"Brave of the Brave"** remains a glorious, legendary soldier, rehabilitated first by popular sentiment, then by the State under the Second Republic and the Second Empire.

Location : Avenue de l'observatoire, 6e arrondissement, Paris



The Paris Catacombs

"A veritable labyrinth in the heart of underground Paris, a unique site in former quarry galleries."

The history of the Paris Catacombs dates back to the 18th century. Opened to the public in 1809, **the world's largest ossuary** (11,000 m²) houses the remains of several million Parisians.

Find out more : <https://www.catacombes.paris.fr/>

Location : 1 av. du Colonel Henri Rol-Tanguy 75014 Paris



Notre Dame de Paris Cathedral

The history of the Cathedral is closely linked to the history of France. Built in the 12th century, modified in the 18th and restored in the 19th, it has been the symbol of Christian worship in Paris over the centuries.

Since the fire on April 15, 2019, the Cathedral has been closed. It will reopen its doors in December 2024.

Find out more : <https://www.notredamedeparis.fr/>

Location : 6 Parvis Notre-Dame – Place Jean-Paul II - 75004 Paris



Arc de Triomphe

The Arc de Triomphe, one of the most famous monuments in Paris, is a national landmark with a strong historical connotation. Under its vault is the tomb of the Unknown Soldier from the First World War.

Currently, it is **dressed in Agitos, the symbol of the Paralympic Games**. The values of courage, determination, inspiration and equality represented by this emblem echo those of the monument.

Find out more : <https://www.paris-arc-de-triomphe.fr/>



Eiffel Tower



At 324 meters high, the Eiffel Tower is the French capital's must-see landmark.

Today, it is **adorned with the Olympic rings**. Known as the “Spectaculars”, they are a powerful symbol of Olympism.

From July 18 to 25, reservations are mandatory.

Find out more :

<https://www.tou Eiffel.paris/fr>



CONTACTS

Prieur Exhibition

Open every day
From July 25 to August 4
From 11 a.m.

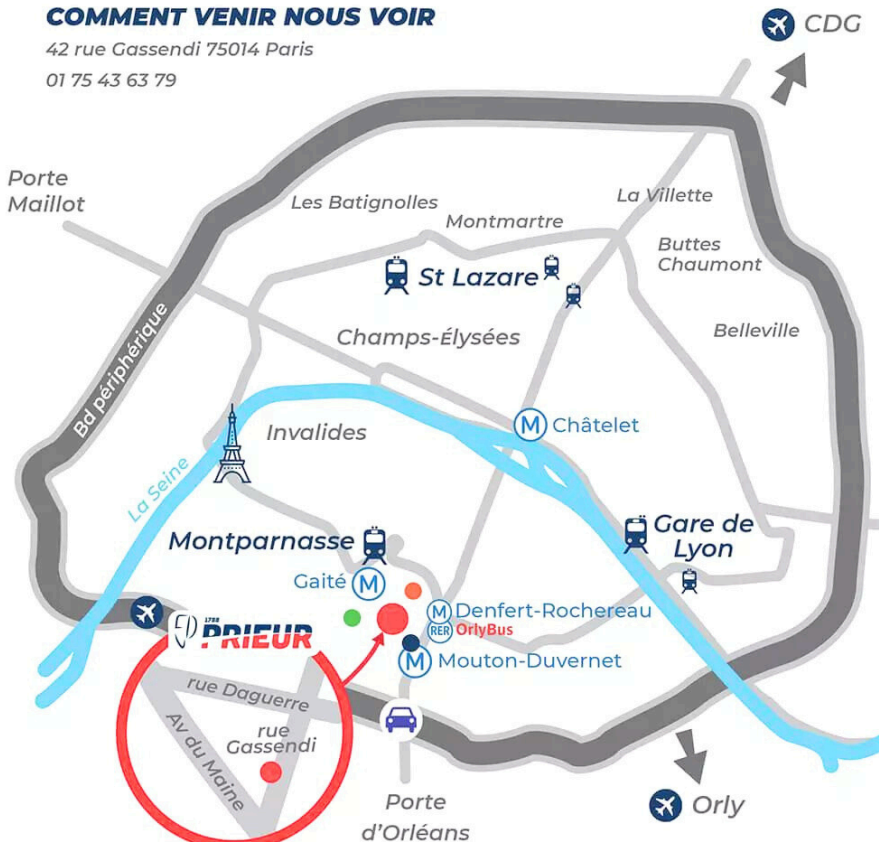
expo.jo@prieur-sports.com

The boutique and the Atelier

Open every day
July 27 to August 4
Mondays and Sundays included

COMMENT VENIR NOUS VOIR

42 rue Cassendi 75014 Paris
01 75 43 63 79



BUS (arrêts à 5 min à pied du magasin)
● 92 et 58 arrêt CHATEAU - MAIRIE DU 14E
● 88 et 59 arrêt FROIDEVAUX - GASSENDI
● 68 et 38 arrêt MOUTON - DUVERNET

MÉTRO (stations à 10 min à pied du magasin)
M6 station DENFER-ROCHEREAU
M4 station MOUTON DUVERNET
M13 station GAITÉ

RER (arrêt à 10 min à pied du magasin)
RER B station DENFER-ROCHEREAU

VOITURE
Proche périphérique sortie porte d'Orléans

AÉROPORT
ORLY (trajet 40 min)
RER B - DENFER-ROCHEREAU
Orly bus - DENFER-ROCHEREAU
CDG (trajet 1h10)
RER B - DENFER-ROCHEREAU

GARE
ST LAZARE (trajet 25 min)
M13 - station GAITÉ
MONTPARNASSE (trajet 10 min)
M6 - station DENFER-ROCHEREAU
Bus 92 ou 58 - arrêt CHATEAU - MAIRIE DU 14E
GARE DE LYON (trajet 30 min)
M14 station CHÂTELET M4 MOUTON DUVERNET



1788
PRIEUR

INSIDE
LES JEUX